

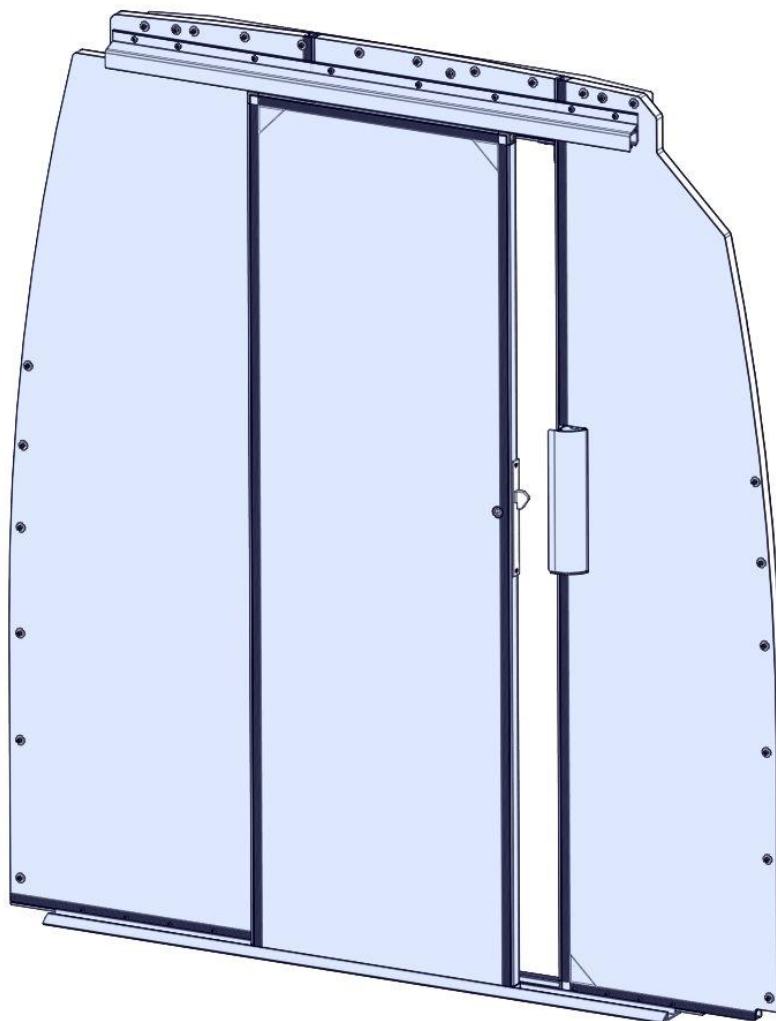
ASSEMBLY INSTRUCTION

SLIDING DOOR SPRINTER H2 EU

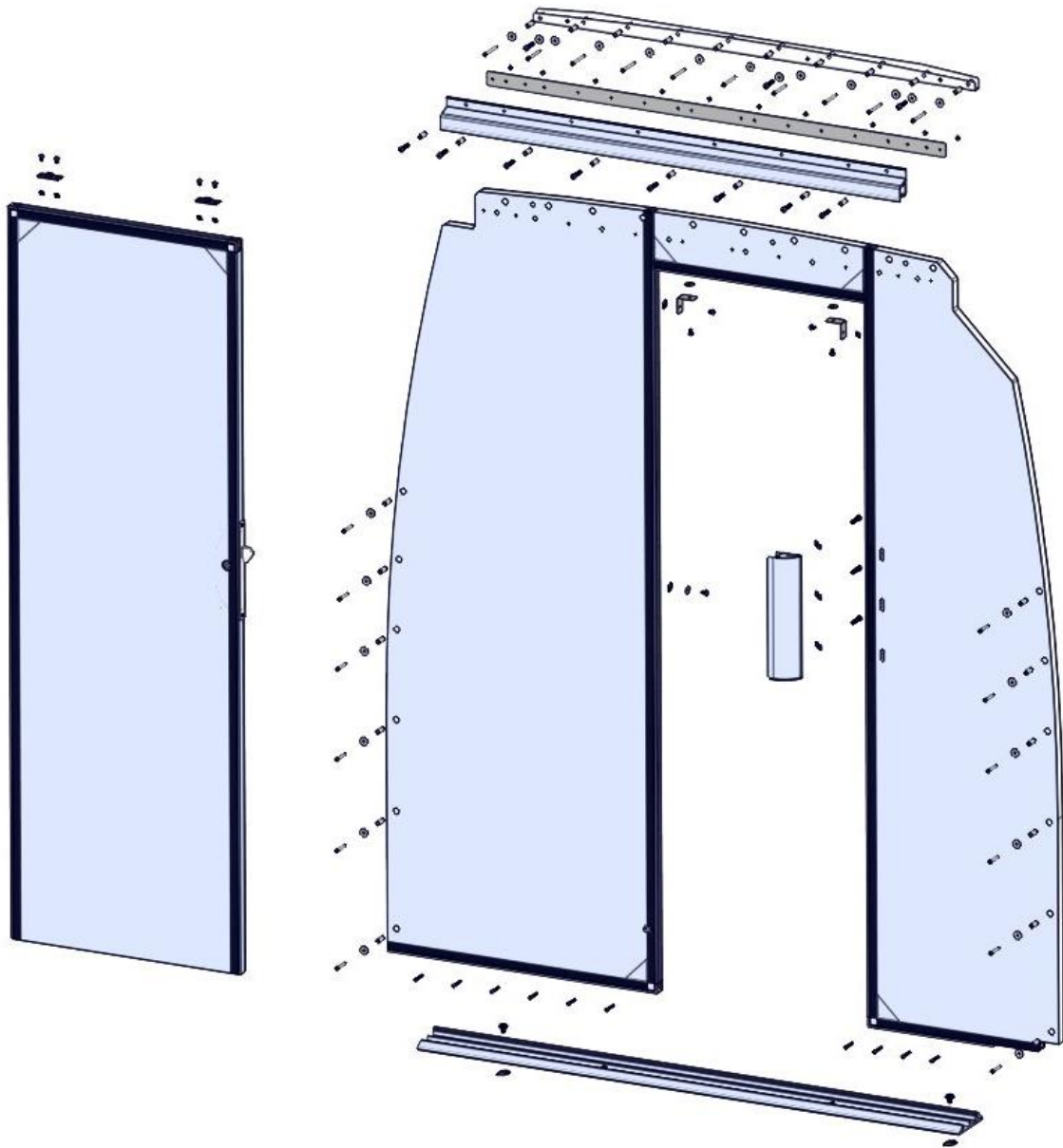
Doc No: 104804

Revision: 01

Composer file: 07018467



Exploded view

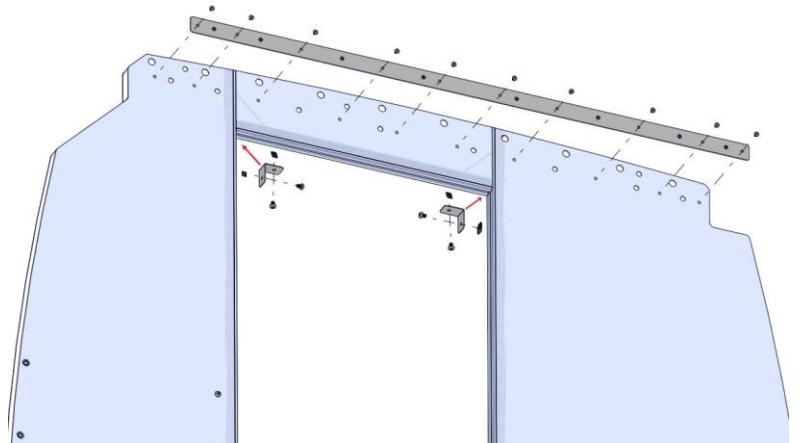


Fittings

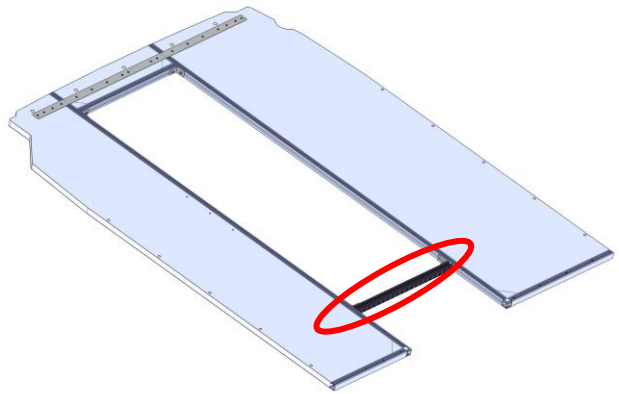
 <p>R11845 - Steel rivet 4,8x8</p>	 <p>R4517 - Screw MRT M6x8 FZB</p>	 <p>R50350 - T-track nut M6 8x23x8</p>	 <p>R6265 - Spacer 10x1,5x26</p>
 <p>R6329 - Screw MRT M6x35 FZB</p>	 <p>R50617 - Safety screw 10,8 M8x12</p>	 <p>R6312 - T-track nut M8 12x35x8</p>	 <p>R6336 - Washer 6,4x20x1,5</p>
 <p>R6334 - Screw RXS 4,2x38 FZB</p>	 <p>R6300 - Locking Nut w flange M6 FZB</p>	 <p>R1008 - Screw M6S M6x10 FZB</p>	 <p>R6182 - Protection Cap - Bolt and Nut</p>
 <p>M5 insex 12.9 DIN912 x40mm</p>	 <p>M5 insex 12.9 DIN912 x60mm</p>	 <p>Roller ball</p>	

Instructions

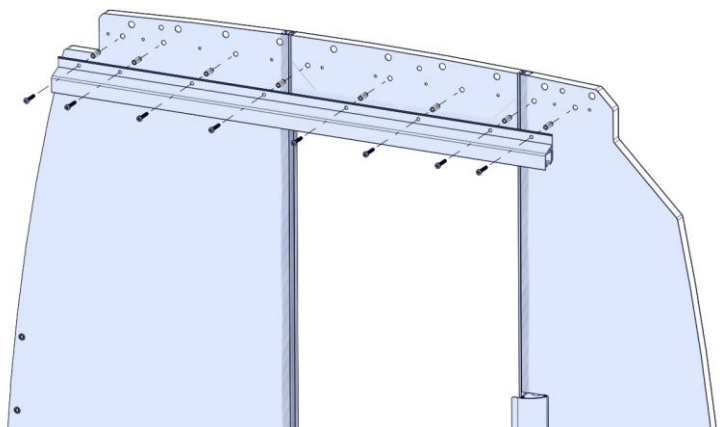
- Fix the top plate on the front compartment side with Steel rivet 4,8x8.
- Use M6x8 and T-track nut to fix two brackets to the top corners of the door opening



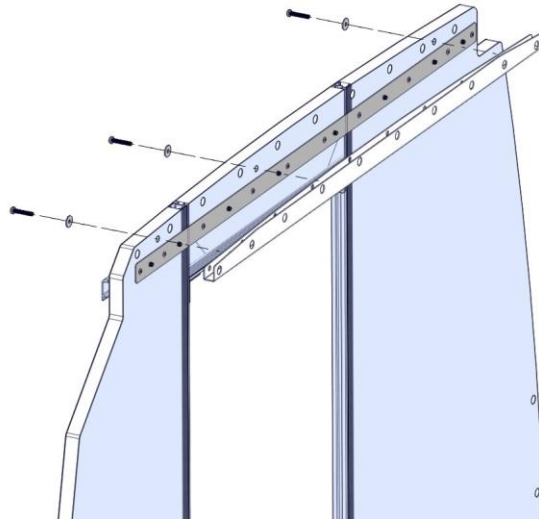
- Add support bar at the bottom of the lower part of the door opening. Recommended to use the 550mm sliding door support bracket accessory.
- Fasten in the t-tracks.



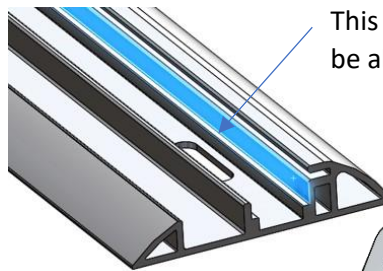
- Flip the door carefully.
- Mount the top rail, placing spacers in all hole and fix with M6x35 FZB screws.



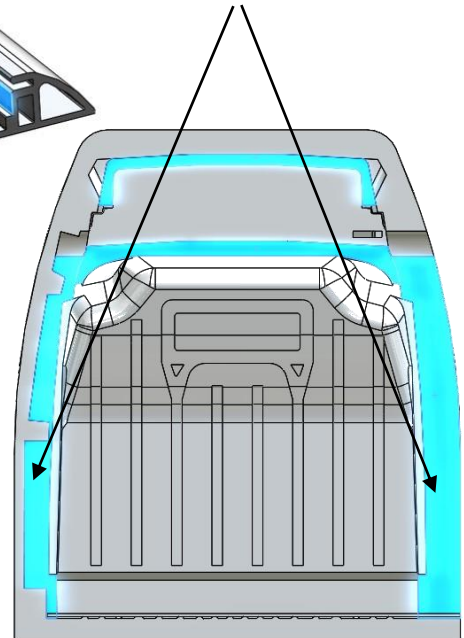
- Mount the top beam bracket with 3x m6 x 35 fzb screws.
- Use 3x m6 washers. Do not use spacers in these holes.



- Mount the bottom profile on the floor rails. Use M8x12 and T-track M8.
- If there is no floor rail, use appropriate length M8 screws and safety nuts.
- Note: Check position of rail with wall mounted before fastening it.



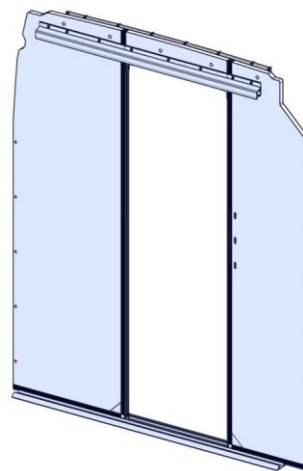
This area of the bottom rail should be aligned with the B-beam.



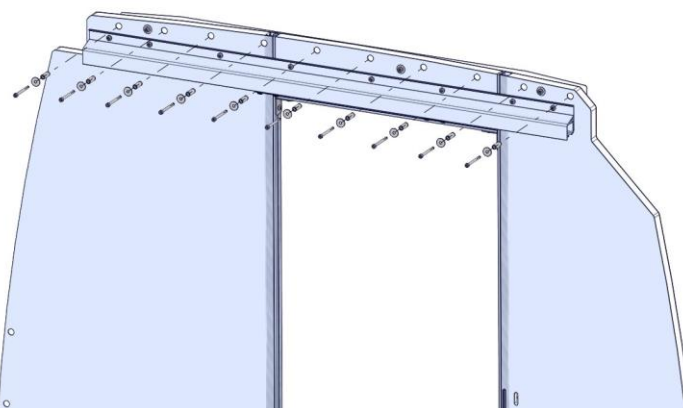
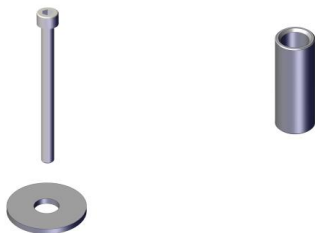
- Fasten edge strip to the side of the wall.
- Use the double-sided tape and approximately 10x st4,2 screws to secure the edge strip to the side of the wall.



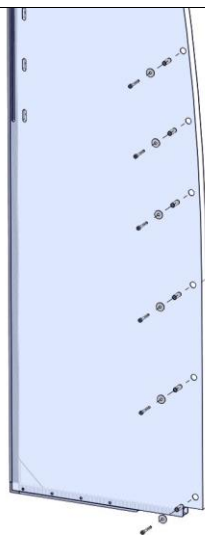
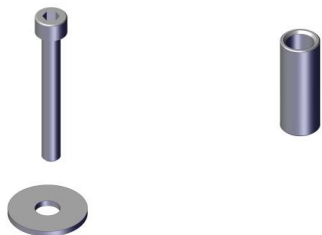
- Place the wall on the bottom rail.



- Mount the wall to the top beam of the car. Place spacer in all holes, use washers before fixing with M5x60 FZB screws.



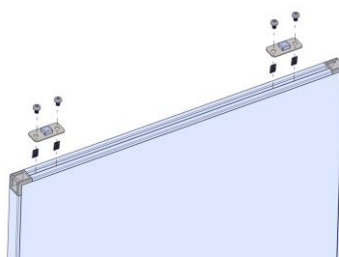
- Mount the wall to the side beams of the car.
- Use M5x40 FZB screws and washers. Place spacers in all holes before mounting.



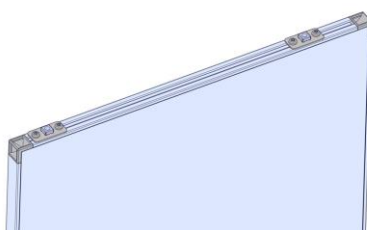
- Mount the top of the door blade with brackets using M6x8 FZB screws and T-track nuts.
- Note the distance of the brackets.



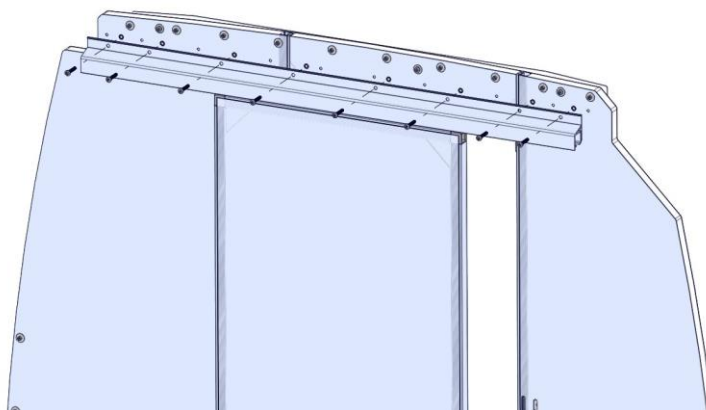
30mm 100mm



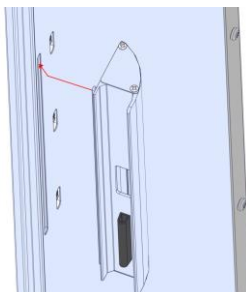
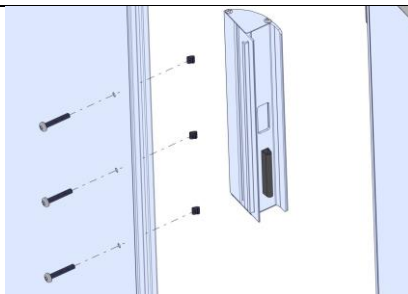
- Assemble the roller ball in to the brackets.



- Remove the top rail from the bulkhead wall.
- Insert the rollers into the top rail while it is disconnected from the wall.
- Place the door and top rail assembly in the bottom rail.
- Lift up the door and top rail assembly until it can be mounted to the wall again.



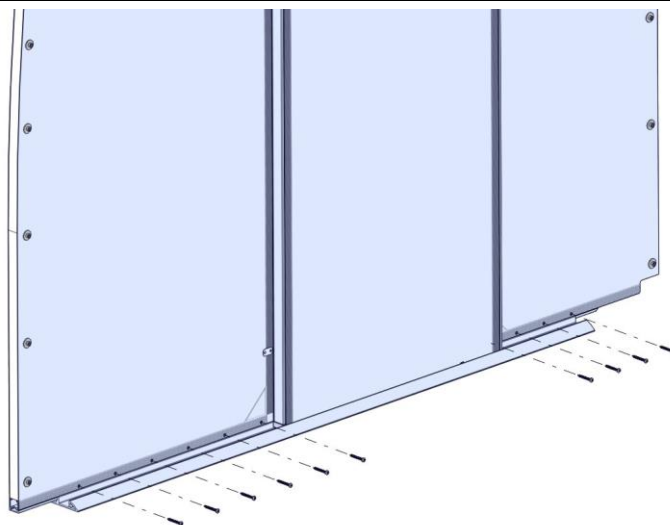
- Fasten the striker by placing M6x35 screws in the hole from passenger side. Fasten with T-track nut and push them back in the slot.
- Insert the sticker profile in the slot cut and push sideward.
- Fasten with T-track nuts.



- Fix the bottom of the wall to the rail with self cutting screw 4,2x38mm



- Remove support bar.



- Assemble handles on lock and door stop
- Align the doorstop with the handle of the lock.
- The doorstop is an M6S M6x10mm fastened in the t-track of the door opening.
- Place a plastic cover hat on the head of the screw.

