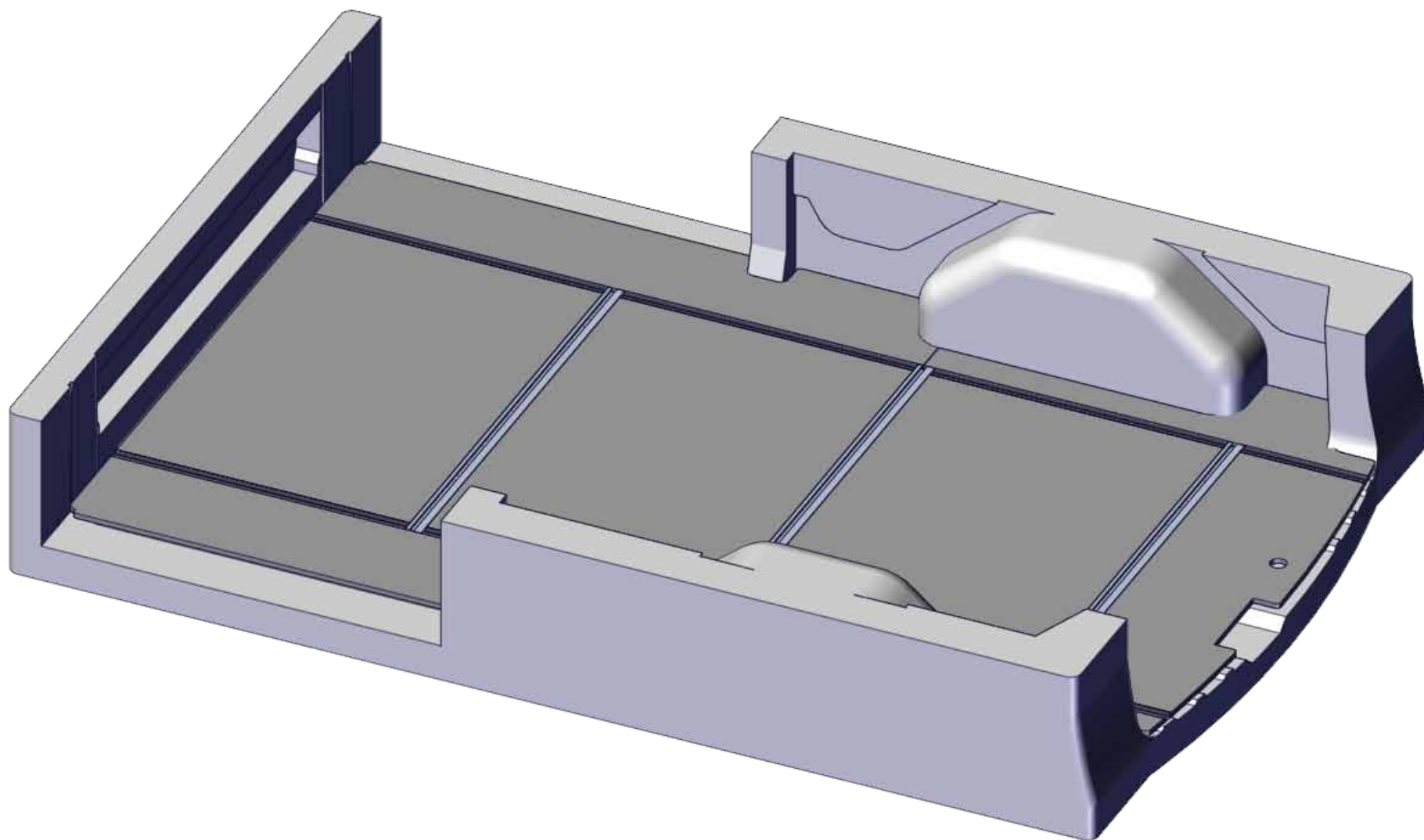
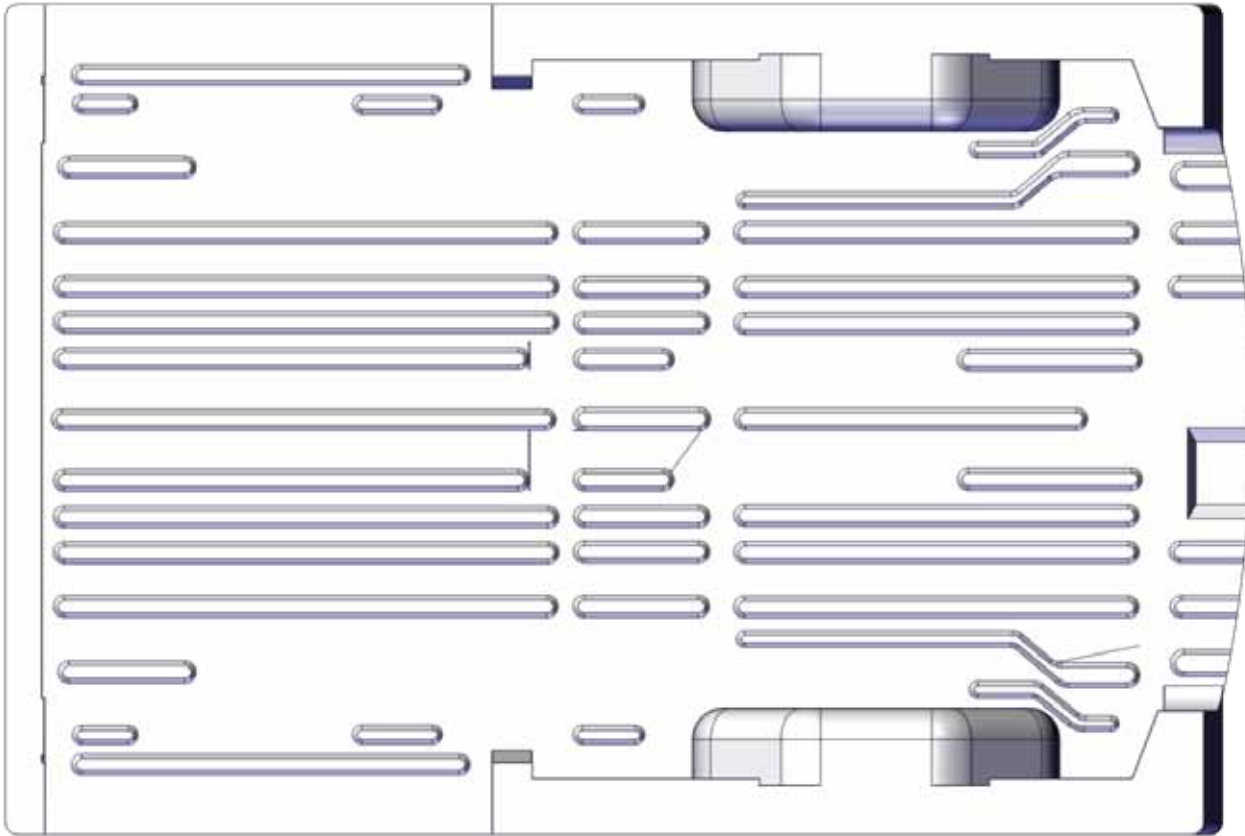


MODUL-SYSTEM

Modul-Floor





1. Take out existing floor or rubber mat.*
2. Disassemble the original lashing eyelets from the van.
3. Clean all the surfaces.
4. Clean floor and floor parts with Cleaner.

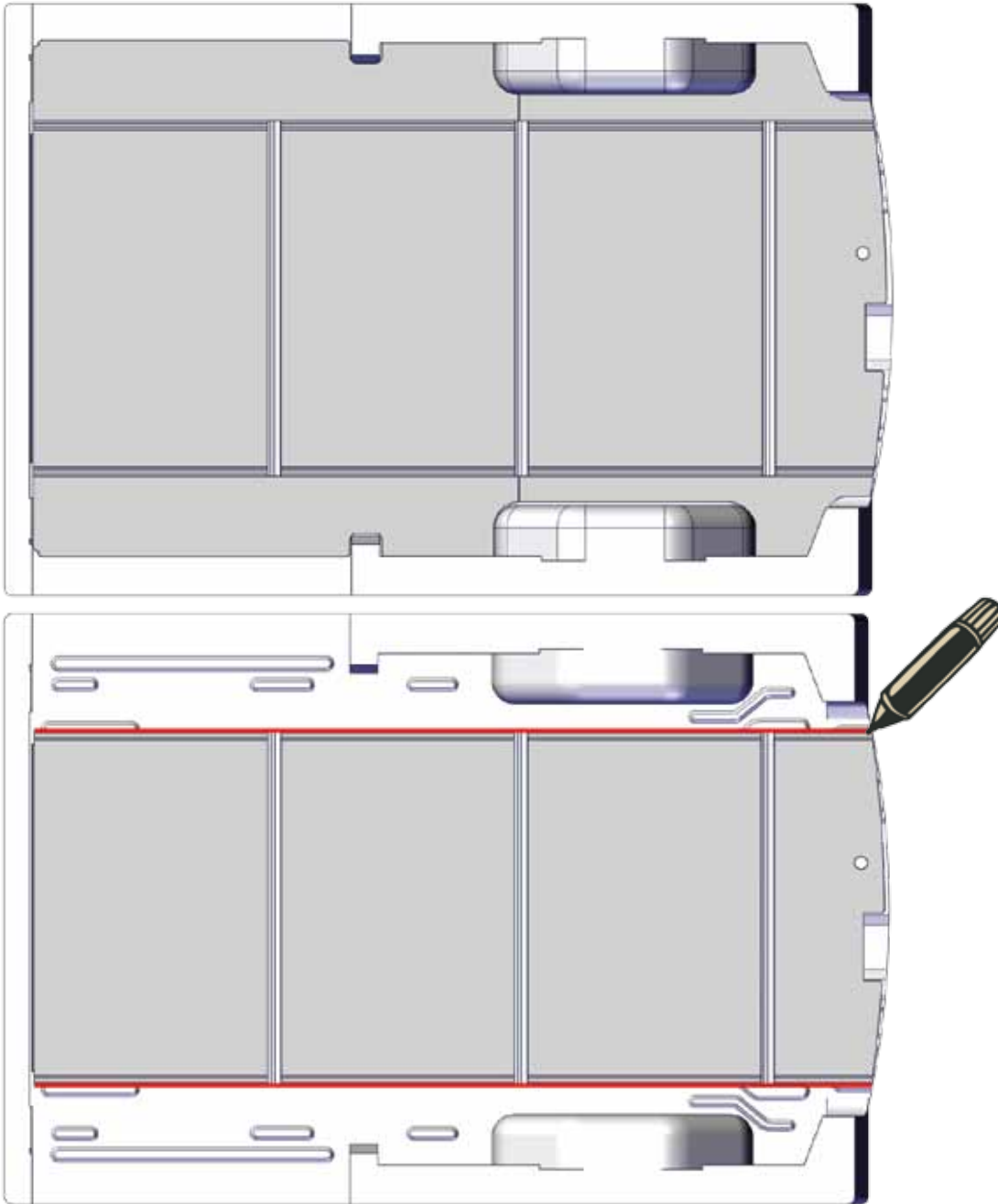
* Original lashings, rails, bulkhead, seats and other accessories that are removed from the van during installation shall be reinstalled according to OEM instructions.



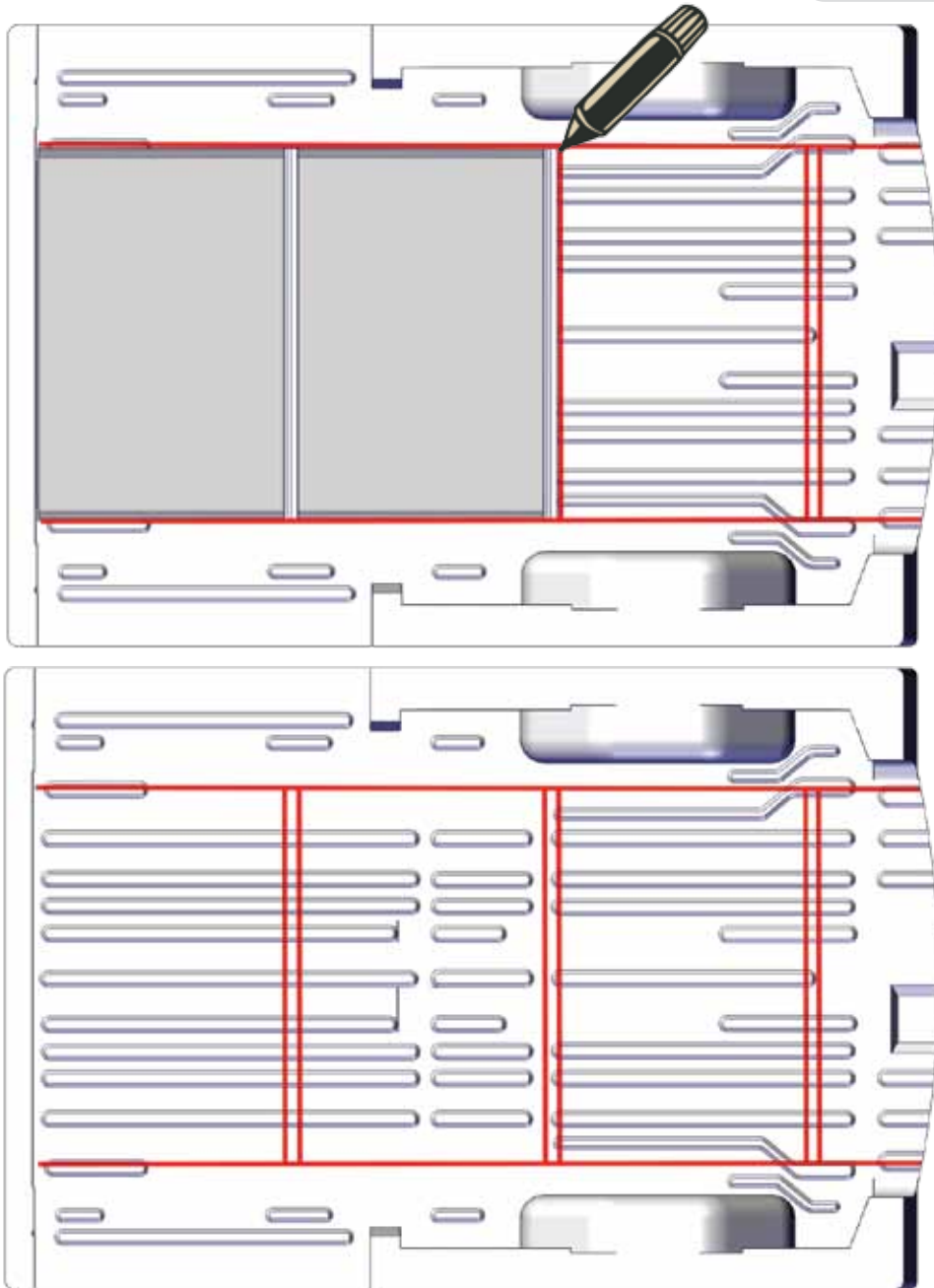
SIKA Cleaner P
Item no 39236

SAFETY GEAR FOR CLEANER

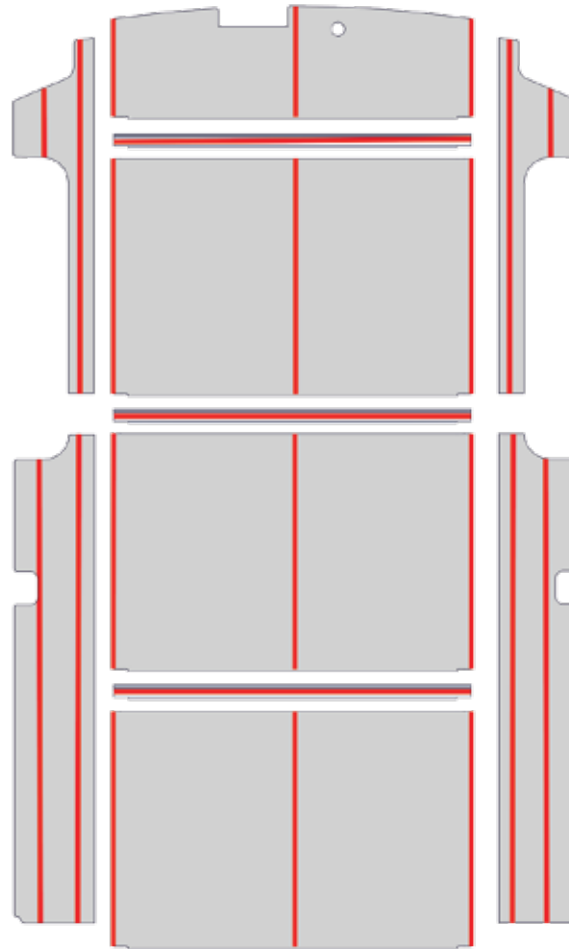
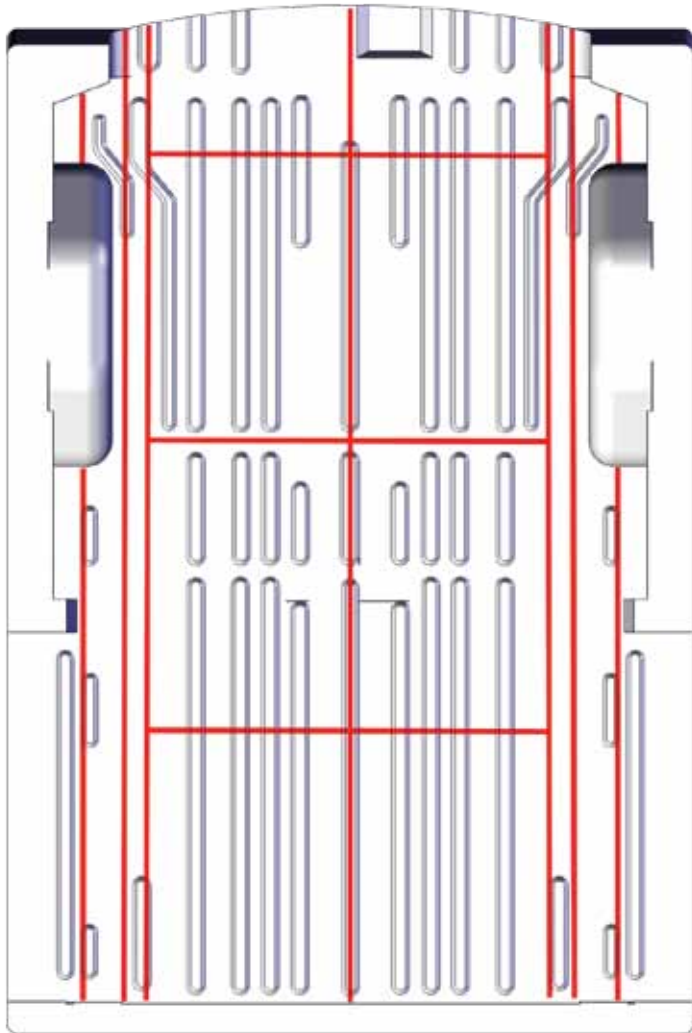




5. Place the Modul-Floor in position and make sure everything fits.
6. Remove the side parts and mark the position with a pencil on each side.



7. Remove one middle part and mark the position.
Do the same with all parts.



8. Apply primer to floor and floor parts.
 1. Primer shall be applied to all floor rails and 2 lines in the centre of the Modul-Floor.
 2. Prime the corresponding floor surface to match primer on the floor parts.
 3. If installing transverse rails, they shall also be primed and corresponding floor surface.
 4. Apply 2 lines of primer to the side parts and corresponding surface on the vans floor.
 5. Wait 10 minutes for the primer to dry.



SIKA Primer
Item no 39230

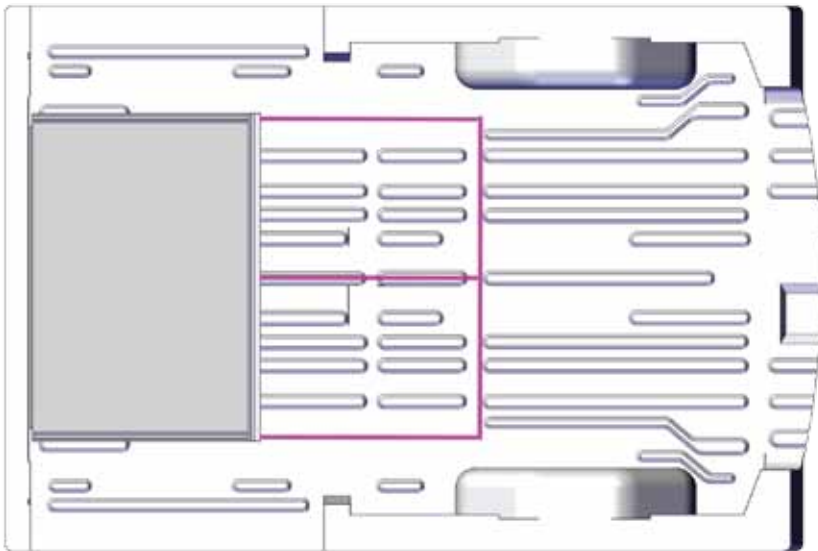
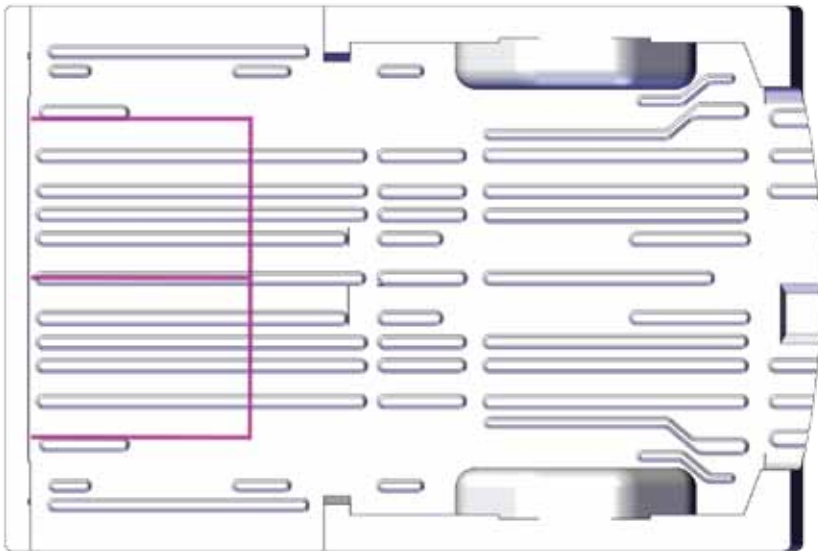


Primer sponge
Item no 39231

SAFETY GEAR FOR PRIMER



Primer drying time (can be applied between 5° to 40°
 Above 15° 10 min
 Below 15° 30 min



Ensure that the glue string is applied to the entire length of all rails. Make sure the shape of the glue string is according to the triangular opening in the nozzle.



9. Apply glue to the floor in the van, only apply glue for one floor part at a time including transverse rail.
10. Start assembling from front and go backwards in the vehicle.

EQUIPMENT FOR GLUE GUN



SIKA Glue 600 ml
Item no 39240



Glue Nozzle
Item no 39235



Glue Gun
Item no 39260

EQUIPMENT FOR GLUE STATION



Glue Barrel - 23L
Item no 39264



Glue Nozzle
Item no 39267



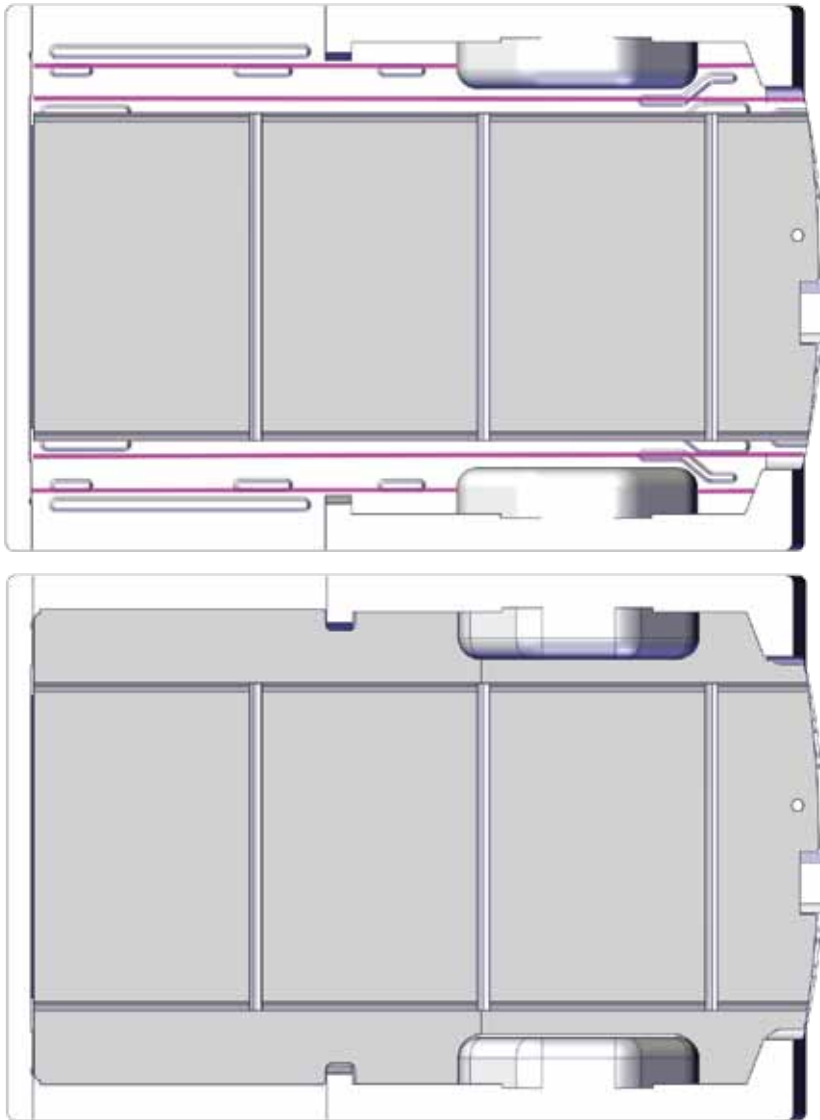
SIKA Booster
Item no 39265



Mixer Tube
Item no 39266

SAFETY GEAR FOR GLUE





11. Proceed with side parts, if the floor surface underneath the side parts are not in line with the remaining floor, chims can be placed to align the side parts.

EQUIPMENT FOR GLUE GUN



SIKA Glue 600 ml
Item no 39240



Glue Nozzle
Item no 39235



Glue Gun
Item no 39260

EQUIPMENT FOR GLUE STATION



Glue Barrel - 23L
Item no 39264



Glue Nozzle
Item no 39267



SIKA Booster
Item no 39265



Mixer Tube
Item no 39266



- Item no:
- | | |
|--------------------|-------|
| Chims 50x 80x 2 mm | 39272 |
| Chims 50x 80x 5 mm | 39273 |
| Chims 50x 80x 10mm | 39274 |

SAFETY GEAR FOR GLUE



Opening time 30 min
Curing time 90 min (start installation of Modul-System)
Vehicle on the road 24h



12. Fix section into place using clamps and wedges to ensure a good fit.



Plastic Wedge
Item no 39275