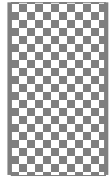




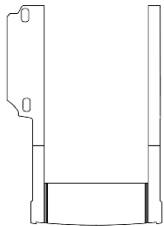
ID. Buzz Floor



Included in kit - RD



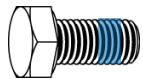
1x Modul-Floor XL 1000x1708



1x Side part package



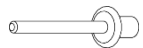
1x Steel plate



4x Bolt M10x30



4x Flat washer 10,5x22x2,0



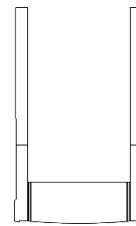
16x Rivet, st/st 4,8x12,1 gr 1,5-3,5



Included in kit - DD



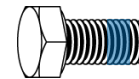
1x Modul-Floor XL 1000x1708



1x Side part package



1x Steel plate



4x Bolt M10x30



4x Flat washer 10,5x22x2,0

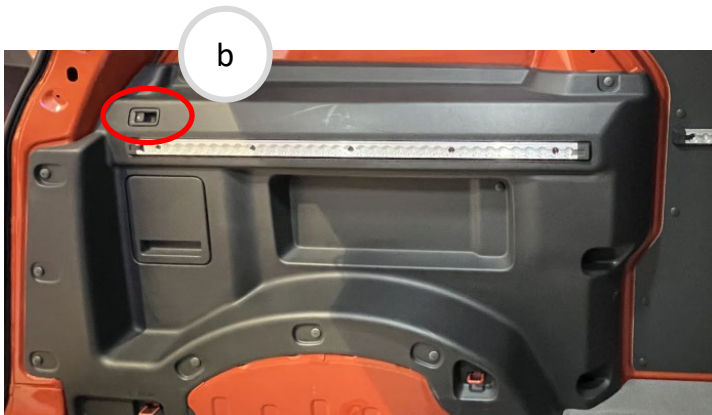


16x Rivet, st/st 4,8x12,1 gr 1,5-3,5

1

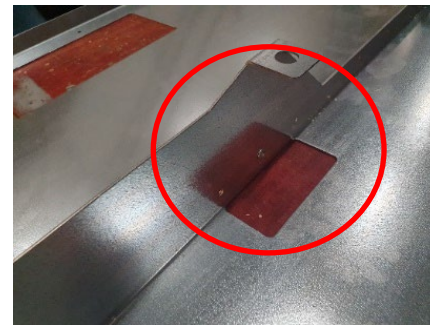
Remove the bulkhead, side wall covers, side instep panel(s), rear instep panel, floor and lashing eyelets from the van.

NOTE! Disconnect the wires from the 12v outlet(a) and towbar control (b) located in the side wall covers.



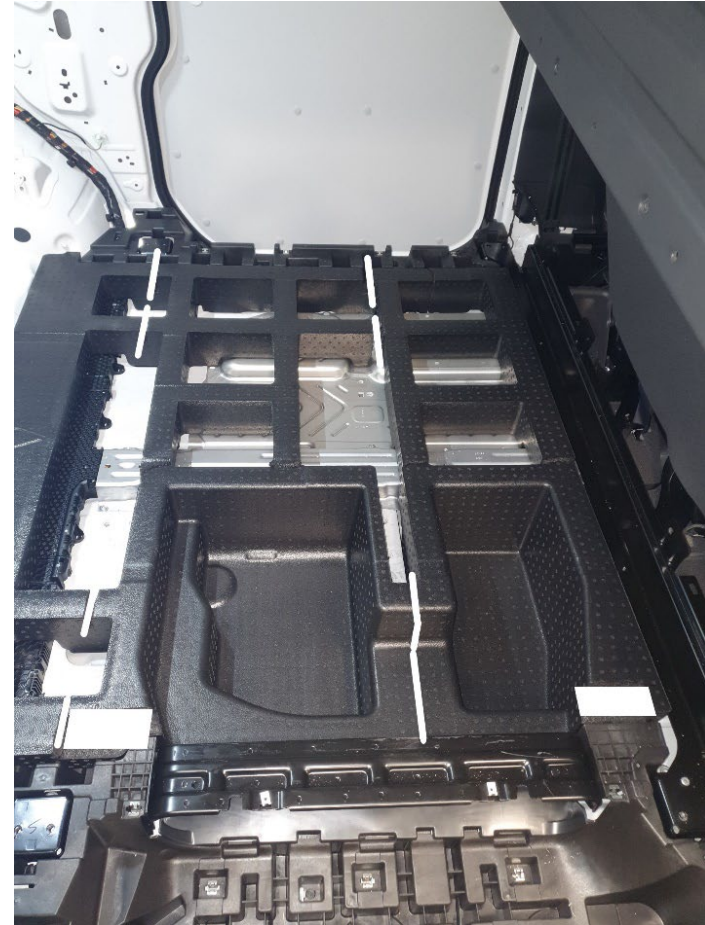
2

Join the support plates with rivets. The rivet heads needs to be located above the cut-out to facilitate installation.



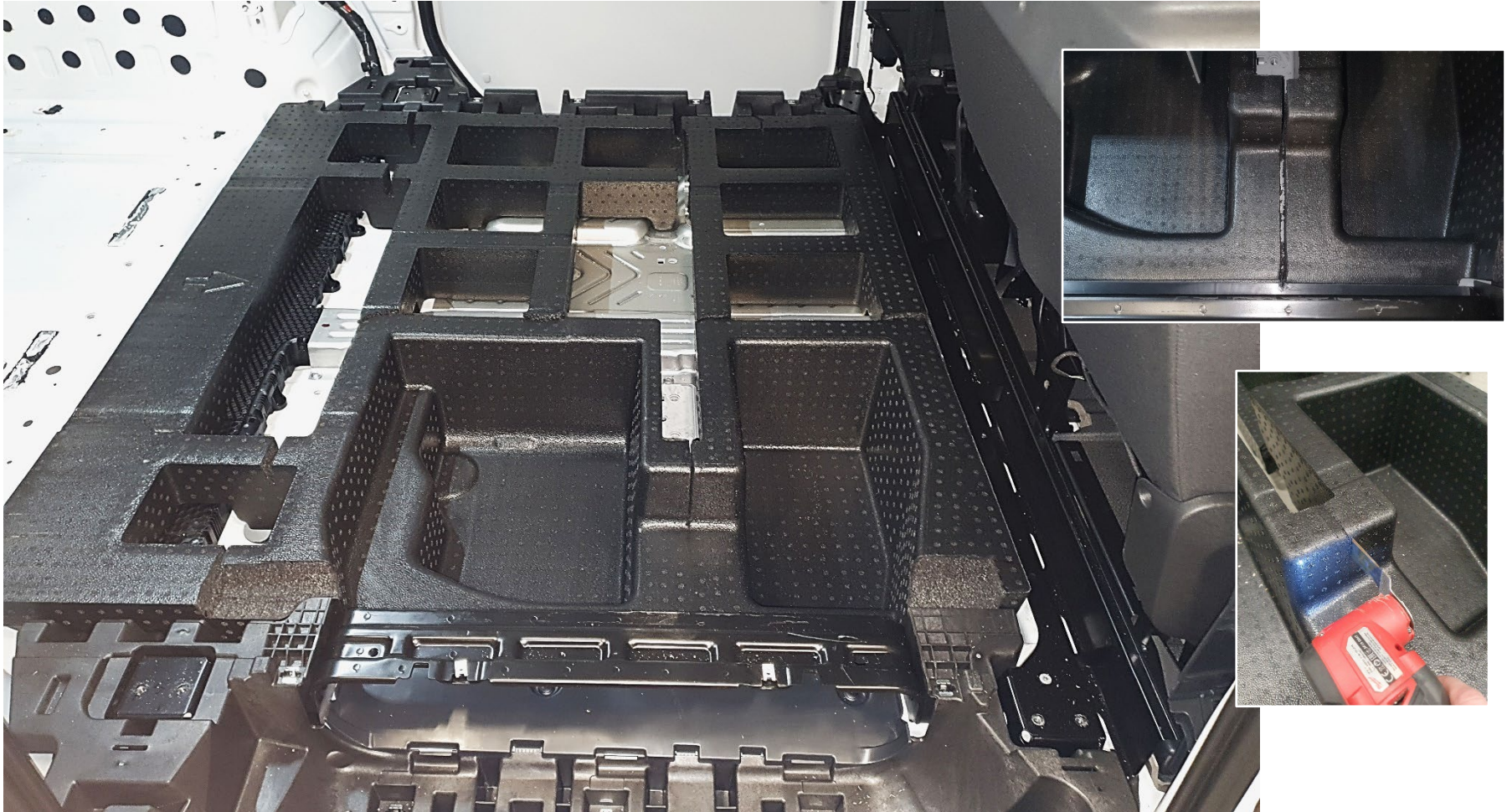
3

Position the joined plates in the vehicle and mark where to cut the plastic. Shown in white below.



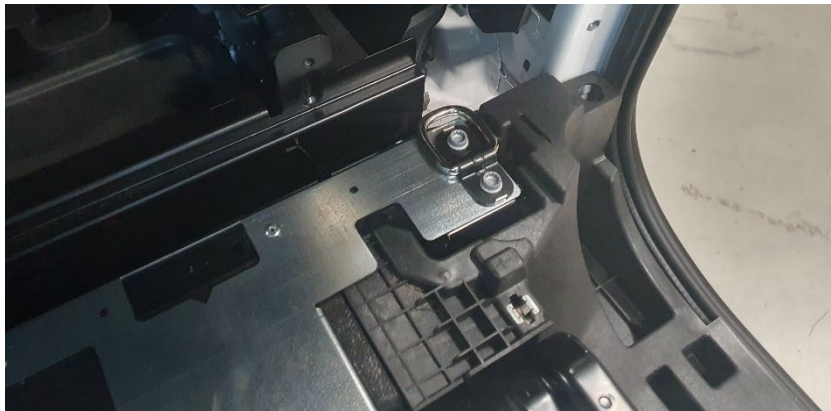
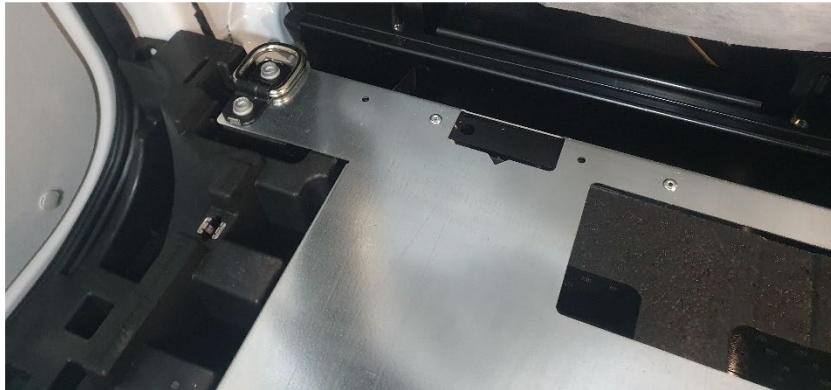
4

Use a multi-tool saw with toothed blade to make cut-outs in the support plastic to accommodate the plates.



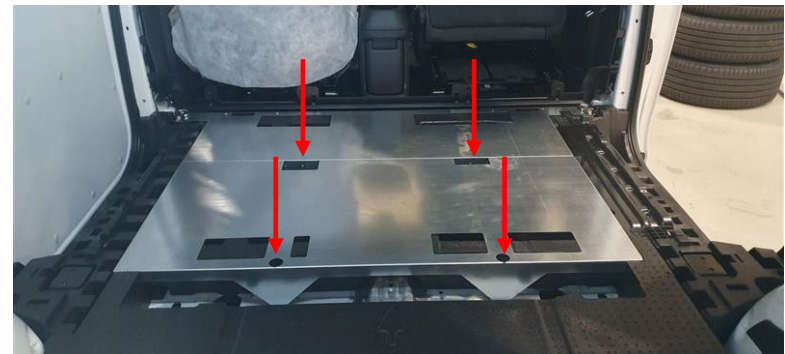
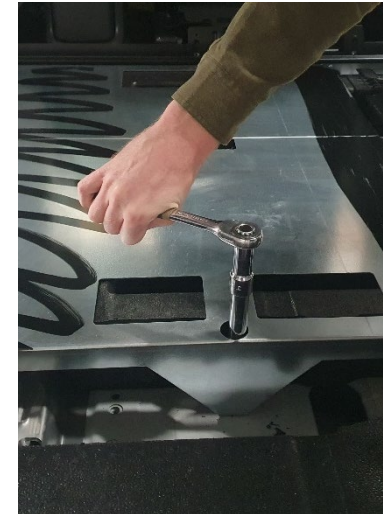
5

To position the plates, secure them loosely with M8 bolts in each lashing eyelet.



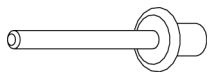
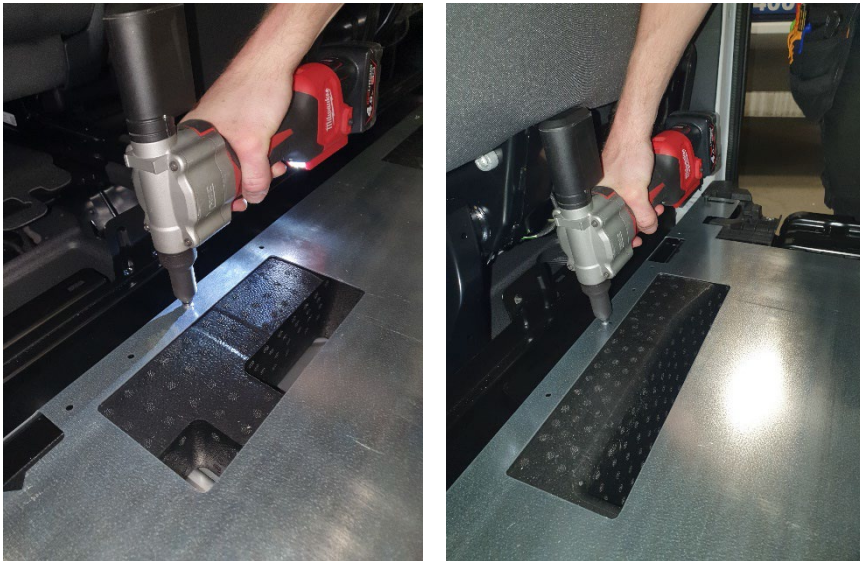
6

Mount the plates to the four existing threaded holes in the vehicle chassis using 4x M10 bolts with thread locking and washers. Tightening torque 47 Nm.



7

Fixate the front of the plates to the vehicle body with two rivets.



2x (st/st 4,8x12,1)

8

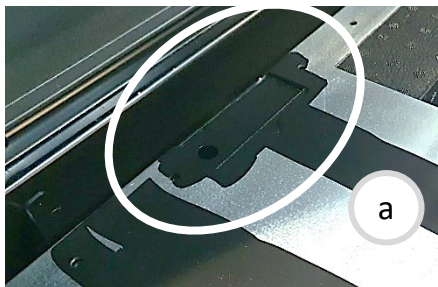
Re-install the bulkhead, side wall plastic covers and side door instep panels with lashing eyelets (torque M8 bolts for lashing eyelets to 24Nm). Do not forget the connectors shown in step 1.



9

Prime and glue like in the picture. Don't forget the cut-out in the front (a) and the steel arch at the rear doors (b). Shims are required for the rear side parts.

Please refer to the general installation guide for Modul-Floor for more detailed instructions.



10

Before installing the floor, remove the three plastic clips mounted to the cord connected to the rear door sensor.



11

When installing the floor, allow for some extra space by the D-pillar for the cord to the rear door sensor. When positioning the cord, also ensure that it is not pinched under the floor side part (c).

Reinstall the rear plastic instep together with the lashing eyelets. The floor shall be positioned so that the rear plastic instep cover can be mounted with a 5-10 mm overhang along with allowing space for the sensor cord.

